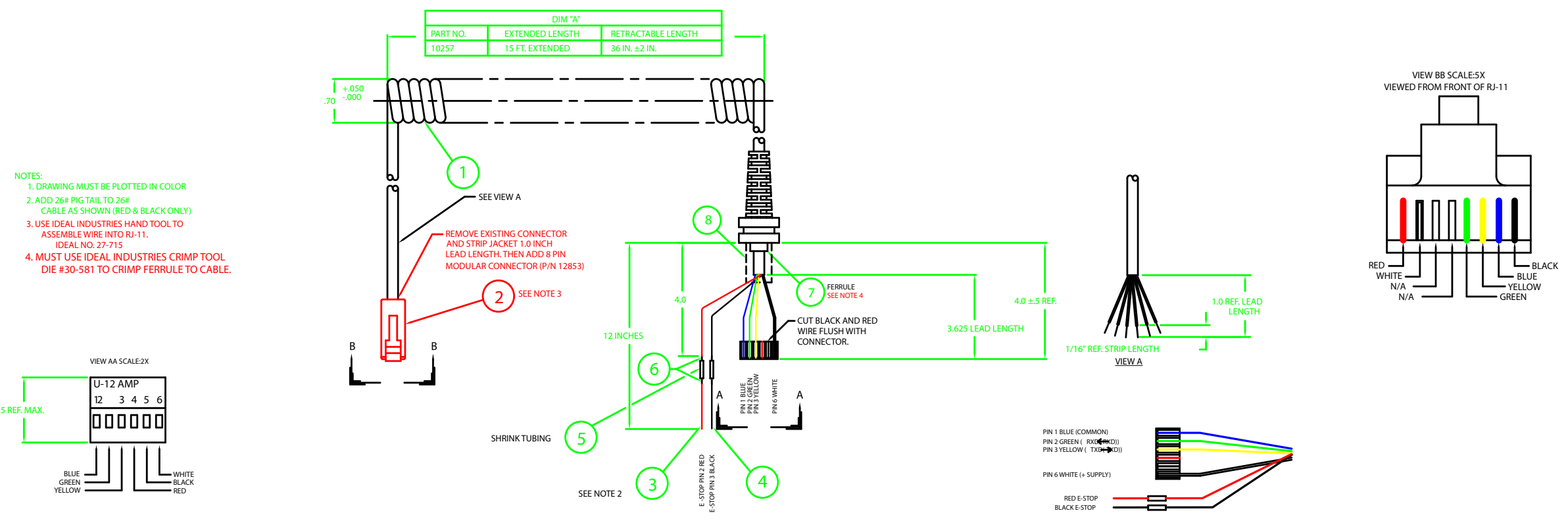


# USE IF CABLE IS BEING MADE IN HOUSE

REVISIONS				
LTR	BY	DESCRIPTION	DATE	APPROVED
B	VT	REMOVED HIROSE CONNECTOR AND ADDED PAN PACIFIC CONNECTOR (ITEM 2)	4-20-98	VT
C	VT	CHANGED PAN PACIFIC PART NO. FROM PT-088KR/SOUL TO PT-0388R/SOUL & SHOWED PROPER LEAD LENGTH IN VIEW A	11-16-98	VT
D	VT	ADDED IN HOUSE INSTRUCTIONS FOR BUILDING CABLE.	11-23-98	VT
E	VT	CHANGED ITEM PART NO 12853 TO 13184 (ITEM 2)	11-24-98	VT
F	VT	CHANGED ITEM 2 TO 13235 FROM 13184 IN OVERSEAS BILL OF MATERIAL.	3-24-99	VT
G	VT	CHANGED LEAD LENGTH FROM 9" TO 12" IN DWG.	1-24-01	VT
H	VT	ADDED METAL FERRULE 13948 AND SHRINK TUBING 10351 TO CABLE.	3-10-03	VT



# USE IF CABLE IS BEING MADE OVERSEAS

